



MEAD QUILTERS

NEWSLETTER

MAY 2025

Contributions to the newsletter are very welcome. Contact Jennie by email: barwise.jennie@gmail.com

or WhatsApp.
07557 882606

Meetings this month

Tuesday 6th May 2025: 9.30 am

Morning sewing meeting. Bring your own sewing. Stuffing will be available for heart cushions and webbing for drain bags.

Saturday 10th May 2025: 1.00 pm

Speaker: Jan Hansard; an award-winning quilter and embroiderer.

[Jan Hassard Quilting](#)



Tuesday 20th May 2025: 7.30 pm

Speaker: Paula Doyle. Stack and whack. Paula's easy stack technique allows you to create a multitude of unique blocks from just one fabric.

[Green Mountain Quilts Studio – Green Mountain Quilts Studio](#)



News of Mead events you might like to get involved in

Living Crafts at Hatfield House: Thursday 8th to Sunday 11th May

Please bring quilts and other items for display on the stall, to the April morning meeting. There is still a gap in the rota on Friday afternoon from 1 to 5 pm. Please contact Jennie if you can help. (details at the top of this letter). Thank you.

Mead Quilters Annual Challenge: Tuesday 17th June

This year's challenge is to make an incubator quilt with a childhood theme. The size of the quilt should be approximately the size of a fat quarter, 19" x 22".

Mead Quilters Retreat 23rd – 25th January 2026

Spaces still available at the very reasonable price of £245 for the whole weekend. Contact Jennie, if you are interested.

Charity News

As you may know, **Ginny Edwards** who is our very active charity member, has recently been appointed as Linus Co-ordinator for south-west Herts.

Project Linus UK has the mission to 'provide love, a sense of security, warmth and comfort to children, who are sick, disabled, disadvantaged, or distressed by donating gifts of new, homemade, washable quilts and blankets, lovingly made by UK volunteer knitters and quilters.

Ginny has sent us this certificate to thank the many Mead members who have donated to this cause.

If you would like to make or donate quilts, details may be found on their website - <https://projectlinusuk.org.uk/>



Listed below are some suggested quilt sizes that you could make -

Baby Quilts: from 24" - 30" square or 24" x 30" rectangular
Children's Quilts: from 36" – 42" square or 36" x 42" rectangular
Teenagers Quilts: from 42" square or 42" x 48" rectangular

Please note that quilts should have no embellishments such as ribbons, buttons or beads because of possible risks to children.

Morning meeting:
show-and-tell



Baby quilt
by Carol M



Panels by Hilary



Quilt by Heather



Ravioli quilt by Ginny



Group quilt assembled by Linda N

Morning meeting: more show and tell



Quilt by Jennie



Quilt by Theresa



Panel by Michelle



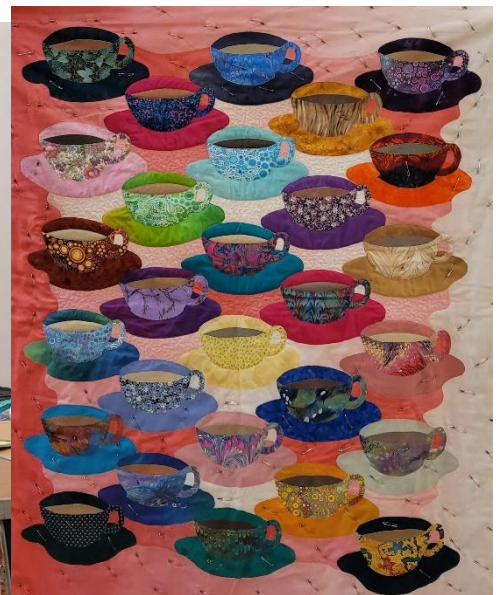
Quilts by Sheila



Evening Meeting: Speaker Angela Madden

<https://anglamadden.com/>

Angela gave us a wonderful talk, talking us through her quilting journey. She had so much of her amazing work to show us, we were overwhelmed and greatly inspired all at the same time! Some of it is shown below. Angela remembers being the first speaker at Mead's inception, many years ago. It was lovely to see her again!



Dates for your diary: Shows, fairs and festivals

Living Crafts, Hatfield House: 8th to 11th May 2025

See notice above to help on our stall and gain free entry!

London College of Fashion Quilting Bee and Talks: 15th May 2025

Queen Elizabeth Olympic Park, E20 2AR. <http://www.withintheframe.co.uk>

Ash Valley Quilters exhibition: 17th – 18th May 2025. Sawbridgeworth
(see below for details)

Springfields Quilt Show: Spalding, Lincolnshire. 6th to 7th June 2025

Patchwork at Kempton Park Racecourse: 13th to 14th June 2025

Festival of Quilts: NEC Birmingham. 31st July to 3rd Aug 2025

Quilt St Albans quilt exhibition: 4th Oct 2025. Redbourn.
(see below for details)

Knitting & Stitching Show: Alexandra Palace, London. 9th to 12th Oct 2025

Autumn Quilt Festival, Newmarket Racecourse, 6th to 8th November 2025

Let us know of any upcoming events that you have heard of, so that we can keep members informed. If you visit any of them, do send pictures!

EXHIBITION ASH VALLEY QUILTERS

Saturday 17th & Sunday 18th May
from 10am to 4pm.

Exhibition of members work, sales
table, tombola, raffle in aid of St.
Clares Hospice, refreshments,

Admission - £5.00

Disabled access; limited parking
at venue; public car park within
walking distance.

*The Memorial Hall, The Forebury
Sawbridgeworth. CM21 9BD
(www.ashvalleyquilters.com)*



The poster for the Quilt St Albans Exhibition 2025 features a large, colorful quilt design in the center. The text is arranged around and below the quilt. At the top right, it says 'SATURDAY 4th OCTOBER 10:00 AM - 4:00 PM' and 'OVER 100 HANDMADE QUILTS'. Below this, it lists the location: 'St John Fisher Church, Peppard Close, Redbourn AL3 7PN'. The title 'QUILT St ALBANS EXHIBITION 2025' is prominently displayed in a white box. To the left of the quilt, there are three circular icons representing different types of quilts: 'QUILTS', 'WALL HANGINGS', and 'AND MORE'. To the right, a list of features includes 'Entrance fee £2 (STEP FREE ACCESS) Under 16's free', 'Visitor's choice', 'Refreshments available TEA - COFFEE - CAKE', and 'FABRIC + HABERDASHERY STALL Provided by FASHION 'n' FABRICS St Albans'. At the bottom, it states 'CASH ONLY FOR ENTRANCE AND REFRESHMENTS' and 'Profits to PEACE HOSPICE + St JOHN FISHER CHURCH'. A website link 'For more information go to WWW.QUILTSTALBANS.COM' is at the very bottom.

SATURDAY
4th OCTOBER
10:00 AM - 4:00 PM

OVER 100
HANDMADE QUILTS

St John Fisher Church,
Peppard Close, Redbourn
AL3 7PN

QUILT St ALBANS
EXHIBITION
2025

QUILTS
WALL HANGINGS
AND MORE

Entrance fee £2 (STEP FREE ACCESS)
Under 16's free

Visitor's choice

Refreshments available
TEA - COFFEE - CAKE

FABRIC + HABERDASHERY STALL
Provided by FASHION 'n' FABRICS St Albans

CASH ONLY
FOR ENTRANCE AND REFRESHMENTS

Profits to PEACE HOSPICE + St JOHN FISHER CHURCH

For more information go to WWW.QUILTSTALBANS.COM

Members Days Out

Francesca visited the **Stitch Festival** at the Business Design Centre in London this month and attended an indigo dying workshop too. 'A very interesting and enjoyable day'.



Morganne went to Oxford with her family to see the Hawaiian quilt exhibition at the **Pitt Rivers Museum**. She reported that it was 'stunning and highly recommended.'



Heather has been on her travels again, visiting the quilt show in Nantes called 'The Salon Pour L'Amour du Fil', known for its beautiful displays. Heather reported on Facebook 'Spent a couple of days in Nantes with my Australian friends. Will post a few photos 🥰🥰. It's such an easy show to get to, and beautifully curated. The lovely Sarah Hibbert is exhibiting and teaching this year too. Highly recommended.' A few of Heather's lovely photos are shown here.



Challenge quilts, all made with the same 5 fat quarters

Mead Quilters online

Mead Quilters website - <https://meadquilters.org.uk>

News of our meetings and show and tell gallery.

Mead Quilters Facebook group

This is a closed group for club members.

<https://www.facebook.com/groups/770972933274429>

Francesca and Heather commented on Facebook about an upcoming film that looks interesting.

The Quilters arrives May 16th on Netflix.

In this award-winning short documentary, men in a Missouri maximum security prison design and sew beautiful, personalised quilts for foster children.



Mead Quilters on Instagram

Janet looks after our Mead Quilters Instagram account. You can follow us here -

[Mead Quilters \(@meadquilters\) • Instagram photos and videos](#)

Events and Speakers at Quilters Guild Groups. March 2025

Sat 17 th May & Sun 18 th May	Ash Valley Quilters, Exhibition	Memorial Hall, Sawbridgeworth. CM21 9BD
Tues 3 rd Jun 7.30pm Visitors welcome, £5.	Speaker at Priory Quilters. Sarah Impey, textile artist: My Quilts	Royston Town Hall, Melbourn Street, Royston. SG8 7DA
Mon 9 th Jun 7.30 pm. Visitors welcome £5	Speaker at Ickneild Quilters. Carolyn Forster: Scrap quilting.	Baldock Community Centre, Simpson Drive, Baldock. SG7 6DH
Thurs 19 th Jun 7.30 pm Visitors welcome £5	Speaker at Ash Valley Quilters. Christine Green: Bust the rules and get creative	Memorial Hall, Sawbridgeworth. CM21 9BD
Thurs 17 th Jul 7.30 pm Visitors welcome £5.	Speaker at Ash Valley Quilters. Kate Findlay: Appliqué Birds	Memorial Hall, Sawbridgeworth. CM21 9BD
Mon 8 th Sep 7.30 pm. Visitors welcome £5	Speaker from Monkey Buttons at Ickneild Quilters	Baldock Community Centre, Baldock. SG7 6DH
Thurs 18 th Sep 7.30pm Visitors welcome £5	Speaker at Ash Valley Quilters. Helen Howes – A journey into 3D	Memorial Hall, Sawbridgeworth. CM21 9BD
Sat 4 th Oct 10am - 4pm	Quilt St Albans group quilt exhibition	St John Fisher church, Peppard Close, Redbourn. AL3 7PN
Tues 7 th Oct 7.30 pm Visitors welcome, £5.	Speaker at Priory Quilters. Pascale Michelski: From Painter to Quilter	Royston Town Hall, Melbourn Street, Royston. SG8 7DA
16 th Oct 7.30 pm Visitors welcome, £5.	Speaker at Ash Valley Quilters. Jane Cheshire: My journey into hand stitched quilts	Memorial Hall, Sawbridgeworth. CM21 9BD

Mead Quilters Programme 2025: future meetings

Tues 3rd June: 9.30 am 	Morning sewing meeting
Tues 17th June : 7.00 pm 	AGM & Summer party. Incubator quilt challenge.
Tues 1st July: 9.30 am 	Morning sewing meeting.
Tues 15th July: 7.30pm Speaker Roxanna Pallet from Hannah's Room The beauty of batiks. https://www.hannahsroom.co.uk/pages/about-us 	 
Tues 5th Aug: 9.30 am	Morning sewing meeting. No evening meeting this month 
Tues 2nd Sep: 9.30 am 	Morning sewing meeting
Sat 13th Sep: 1:00 pm	Saturday sewing day 
Tues 16th Sep: 7.30 pm Book/gadget evening 	Bring a sewing related book to share, a useful gadget or one that you don't know how to use.
Tues 7th Oct: 9.30 am 	Morning sewing meeting
Tues 21st Oct: 7.30 pm Speaker Joy Harber Log cabin quilts https://joysalvage.wordpress.com/ 	  
Tues 4th Nov: 9.30 am 	Morning sewing meeting
Sat 15th Nov: 1:00 pm Workshop with Janet Goddard	Saturday sewing day. Make a Christmas cracker. 
Tues 18th Nov: 7.30pm Speaker Annie Folkard Inspired by colour https://anniefolkardquilts.co.uk/ 	  
Tues 2nd Dec: 9.30 am 	Morning sewing meeting with mince pies
Tues 16th Dec: 7.30 pm	Christmas party 